

Semiconductor Light-Controlled Instrument Transducer with Direct PWM Output for Automatic Control Systems

O. Malik*, F. J. De la Hidalga-W.

Instituto Nacional de Astrofísica, Óptica y Electrónica (INAOE)
Departamento de Electrónica
Puebla, México
*amalik@inaoep.mx

ABSTRACT

This work shows that the direct PWM output electric signal, with a duty cycle controlled by light intensity, can be obtained using a circuit containing a saw-tooth voltage generator connected in series with a dc voltage source and a metal (semitransparent gate) oxide semiconductor capacitor (MOS-C).

The internal PWM signal conversion occurs by the use of non-equilibrium physical processes in the semiconductor substrate of the MOS-C. The 10-20 V amplitude limited square PWM output signal is obtained by the amplification of the sensor signal with a standard 60 dB transimpedance amplifier. The amplified output signal presents positive and negative PWM waveforms that can be easily separated using diodes. The duty of the positive part is proportional to the light intensity, whereas the negative part is inversely proportional to the intensity. The frequency operating range of this proposed instrument varies from 1 Hz to a few kilohertz. The duty cycle of the PWM output signal varies from 2% to 98% when the incident light intensity varies in the microwatts range. These new transducers or sensors could be useful for automatic control, robotic applications, dimmer systems, feedback electronic systems, and non-contact optical position sensing for nulling and centering measurements.

Keywords: MOS-C transducer, light controlled, PWM output.

RESUMEN

Cualquier sistema de instrumentación consiste de tres elementos: el sensor o dispositivo de entrada, el procesador de señales, y el receptor o dispositivo de salida. Diversos sistemas de control automático o con retroalimentación requieren una señal eléctrica de salida en forma de pulsos con modulación en su ancho (PWM). Generalmente la señal analógica de salida se transforma usando un convertidor de señal PWM.

En este trabajo se muestra que una señal de salida PWM, con una razón ancho-de-pulso/período (duty cycle) controlado por la intensidad de la iluminación, puede obtenerse directamente utilizando un circuito que contiene un capacitor metal (compuerta semitransparente)-óxido-semiconductor (MOS-C) conectado en serie con una fuente de DC y un generador de funciones que proporciona un voltaje periódico en forma de dientes de sierra.

Internamente, la conversión de señal a PWM se logra explotando los procesos físicos fuera de equilibrio que se presentan dentro del sustrato de silicio del MOS-C. La señal cuadrada PWM, cuya amplitud está limitada a 10-20 V, se obtiene mediante la amplificación de la señal de transductor usando un amplificador estándar de transimpedancia de 60 dB. La señal de salida amplificada presenta una forma de onda PWM positiva y negativa que pueden separarse usando diodos.

La razón ancho-de-pulso/período de la parte positiva es proporcional a la intensidad de la iluminación, mientras que la parte negativa es inversamente proporcional a dicha intensidad. La frecuencia de operación de este instrumento se encuentra en el rango de 1 Hz hasta algunos kilohertz. La razón ancho-de-pulso/período de la señal de salida PWM varía entre 2 y 98% cuando la potencia de la iluminación es del orden de *microwatts*.

Este nuevo transductor o sensor podría ser útil para aplicaciones en control automático, en robótica, control de iluminación, sistemas de retroalimentación, y para la detección óptica de posición sin contacto para mediciones de centrado y anulación. Finalmente, se presenta una descripción detallada de los principios físicos y de operación de este nuevo transductor.

1. Introduction

Among the several well-known optical sensors based on metal-semiconductor contacts or p-n junctions, metal-oxide-semiconductor capacitors (MOS-C) are known as the basic part of charge coupled devices (CCD) used in imaging technique [1].

The charging and discharging processes under irradiation in such devices are possible due to non-equilibrium processes in these semiconductor capacitors [2]. On the other hand, these processes are important for determining important physical parameters of the semiconductor substrate, such as the carrier concentration, generation and recombination times of minority carriers, and the characteristics of the semiconductor-oxide interface [3-6].

In this work we present new aspects of non-equilibrium processes in MOS capacitors with the aim of extending their optoelectronic applications as sensitive optical transducers with direct quasi-digital output in the form of a pulse-width-modulated (PWM) electrical signal. These sensors, with the new operating principle, allow for the simplification of electronic circuits necessary for automatic, robotic, and metrological applications.

We will also discuss the design and properties of a new optical position detector based on a bi-MOS structure that may be used as a sensitive null indicator with direct digital output in nulling and centering measurements.

2. Operating principle

2.1 Physical model

Sensors are based on non-equilibrium physical processes that become present in MOS capacitors which are initially biased by a constant voltage in the strong inversion operating mode. If a voltage pulse is added to this dc bias, an increase of the space charge region width (SCR) to a non-equilibrium value takes place. The excess minority carriers generated in the substrate lead to a reduction of the SCR width to its initial value, and the capacitor returns to its equilibrium mode. In absence of irradiation, the retention time depends on the generation rate of minority carriers in the substrate that is determined by the generation

lifetime. The irradiation effectively decreases this time in comparison to that case under dark conditions. This fact is the basis of the new optical sensors. Let us qualitatively consider the processes occurring in the MOS capacitor, with an oxide capacitance C_{ox} , and initially biased by a dc voltage U_1 in strong inversion. At a certain time, the additional triangular voltage with amplitude U_2 is applied to the gate of the capacitor as shown in Fig.1.

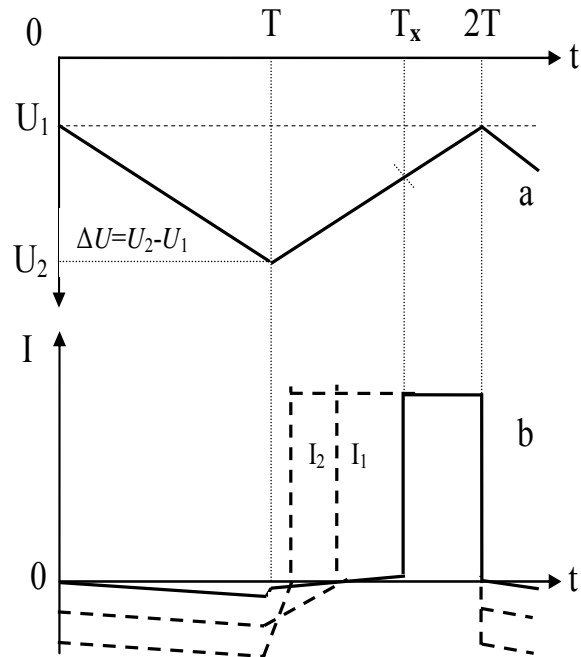


Figure 1. Schematic representation of the voltage (a) applied to the gate of the MOS capacitor, and the current (b) flowing through the capacitor: solid line- under dark conditions, dashed lines- under irradiance with $I_2 > I_1$.

At the first half period, the increase of the voltage from U_1 to U_2 , with a rate $\Delta U/T$, leads to a time-dependent increase of the SCR width, from its stationary value W_{inv} to its maximum W_2 at $t=T$ when a potential well is created. Both kinds of minority carriers, those generated thermally in the SCR, and those diffused from the neutral volume of the substrate, start filling this potential well, which decreases the SCR width.

If the flow of minority carriers is not too high, the potential well will not be filled completely during the first half period, and this process may also continue during the second half period until the

voltage reaches U_x . At $t=T_x$, when the created potential well is filled, the MOS capacitor abruptly returns to its initial equilibrium state. At that time, the charge of the capacitor is $C_{ox}(U_x-U_1)$ and the displacement current presents the constant value $C_{ox}dU/dt$. The irradiation increases the generation rate of minority carriers in the substrate, and the transition time becomes shorter than that obtained under dark conditions. This is shown in Figure 1b by dashed lines for two radiation intensities.

2.2 Mathematical model

Using absolute values, the triangular voltage bias shown in Figure 1 can be described by:

$$\begin{aligned} U(t) &= U_1 + \frac{\Delta U}{T}t, & (0 < t < T) \\ U(t) &= U_2 - \frac{\Delta U}{T}(t - T), & (T < t < 2T) \end{aligned} \quad (1)$$

The filling of the potential well with photo-generated minority carriers (the "charging" process) depends on the generation rate G . If the incident radiation has a low intensity, the charging of the MOS capacitor by the photo current occurs even when the functional voltage starts decreasing at the second half of the period.

When the potential well is filled, the reduction of the voltage till U_x at the time T_x leads to the returning of the capacitor to its initial equilibrium mode. At time T_x , the charge stored in the potential well during the photo generation is equal to the capacitor charge at the voltage (U_x-U_1) . This fact can be described as:

$$\frac{qGA}{\alpha}T_x = C_{ox}(U_x - U_1), \quad (2)$$

where q is the electron charge, α is the absorption coefficient of the semiconductor substrate at the wavelength of the incident radiation, and A is the gate area. The time T_x , as a function of the generation rate, can be found from (2) using the second equation of (1) for U_x :

$$T_x = \frac{2T}{1+K}, \quad K = \frac{qGAT}{\Delta U \alpha C_{ox}} \quad (3)$$

If the MOS capacitor is connected in series with a function generator (dc plus the triangular voltage), the output signal observed in a load resistor is a pulse with a duration of $2T-T_x$.

The duration of the output pulses and the duty D for the output signal (the ratio of the pulse duration to the period of the triangular voltage) are proportional to the irradiation intensity. This is because a higher intensity of the incident radiation provides a faster transition of the capacitor to its equilibrium mode. Thus, the output is a pulse width modulated electrical signal.

Taking into account (3), the equation for the output signal duty can be written as:

$$D = \frac{2T - T_x}{2T} = \frac{K}{1 + K}. \quad (4)$$

Taking into account that $G = \alpha P_{opt}/Ah\nu$, where P_{opt} is the power of the incident optical radiation with a photon energy $h\nu$, the inverse dependence of the duty on the incident power can be written as:

$$\frac{1}{D} = 1 + \frac{qP_{opt}T}{\Delta U C_{ox}h\nu}. \quad (5)$$

The duty does not depend on the area of the capacitor. Note that in the case of a triangular voltage with period $2T$, the maximum duty under irradiation can be only 0.5 when T_x is equal to the half period.

To obtain a higher range of duty due to the variation of the radiation intensity, a saw-tooth time dependent voltage must be applied to the gate. In this case, the sharp increment of the voltage from U_1 to U_2 during time Δt , which usually is 1-2% of T , creates the potential well, whereas the filling of this well by the photo generated carriers occurs during the slow decrement of the voltage from U_2 to U_1 during $T-\Delta t$. Then, using similar arguments as those used for the triangular voltage, the dependence of the duty on the incident radiation power is:

$$\frac{1}{D} = 1 + \frac{qP_{opt}(T - \Delta t)}{\Delta U C_{ox}h\nu}. \quad (6)$$

In this case, the duty range may vary from 0.2 to 0.9 under irradiation.

There are some frequency limitations for both, the triangular and the saw-tooth voltages cases.

The low frequency limit is determined by the generation rate of minority carriers in the SCR as well as their diffusion from the neutral substrate. The low generation rate occurs at a long generation time of minority carriers. For example, if the generation time is ~ 0.5 ms, the transition time T_x will be close to 2 s, and the low frequency limit will be 0.5 Hz. Thus, the typical operating frequency for a non-equilibrium MOS-C under illumination corresponds to a few hertz. The high frequency limit is determined by the time response of the minority carriers with respect to the voltage variation and the reactance of the capacitor, and it lies in the range of a few kilohertz.

3. Results

3.1 Fabrication and measurements of the MOS capacitors

To probe our conception, MOS capacitors were fabricated on high resistivity (2-4 k Ω -cm) n-type silicon substrates, with a 70 nm thermal

grown oxide, and a titanium semitransparent gate. For measurements, the capacitor was connected in series with a function generator, with a dc offset and a load resistor as shown in Figure 2. The output was recorded using the digital oscilloscope TDS 3054C; a light emitting diode (LED), with emission at 0.9 μ m, was used to illuminate the MOS capacitors.

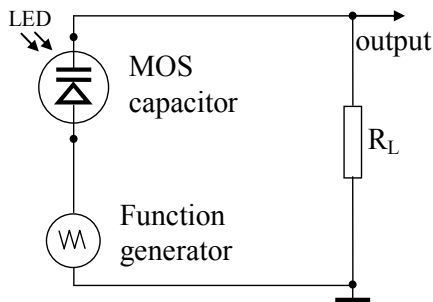


Figure 2. Circuit used for the measurement of the MOS-C optical sensor.

3.2 Experimental results and discussion

Figure 3 shows the current for the MOS capacitor under dark conditions after applying the dc and the triangular voltage. The oscillograms for the current flowing in the capacitor under illumination were recorded for an LED incident power varying in the 20 nW to 0.5 mW range.

From Figure 4, one can see the difference in the transition time for the illuminated MOC-C, under different illumination conditions, when the capacitor was biased with the dc and triangular (60 Hz) voltages. The transition time decreases for an increasing illumination.

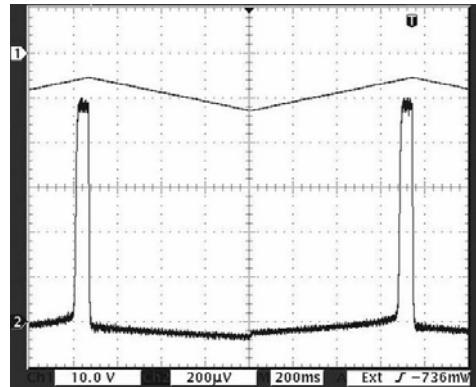


Figure 3. Oscillograms showing the applied dc and triangular voltages (above, scale 10 V/div) and current in dark (below, scale 200 μ V) obtained with a 50 k Ω load resistor.

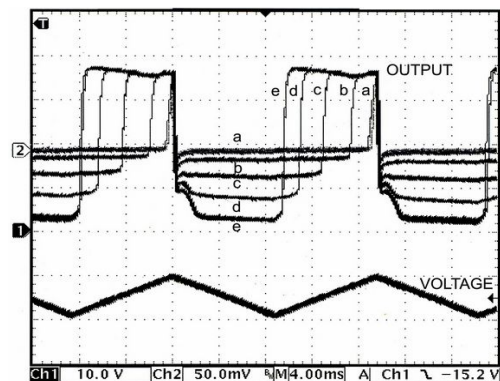


Figure 4. Oscilloscope traces (4 ms/div) for the applied dc and triangular voltages (below, 10 V/div), and current (50 mV/div, curves a-e), obtained for the illuminated capacitor. The illumination increases from a to e.

Figure 5 shows the oscillograms for the current of the illuminated MOS capacitor when a saw-tooth voltage is applied to the gate.

To obtain a “clear” PWM output signal presenting sharp transitions at both edges of the pulse, the signal from the load resistor was amplified in 10^3 times, and limited by the amplifier to 10 V. The negative part of the signal due to the photocurrent was rejected using a diode.

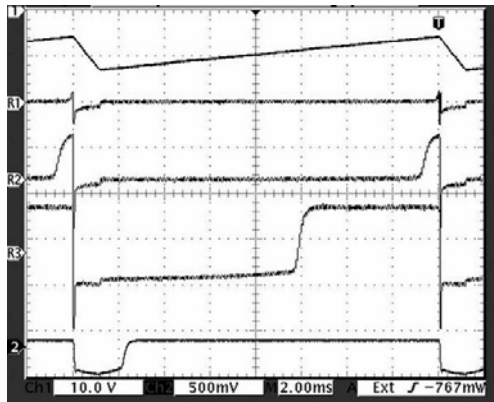


Figure 5. Oscillograms (2ms/div) for the applied voltage (above, 10 V/div) and current (500 mV/div) for dark (R1) and three irradiation conditions (R2, R3 and 2). The scale for the last current oscillogram was multiplied by ten.

Figure 6 shows the oscillograms for the amplified output for the dc and triangular voltages applied to the gate of the MOS capacitor.

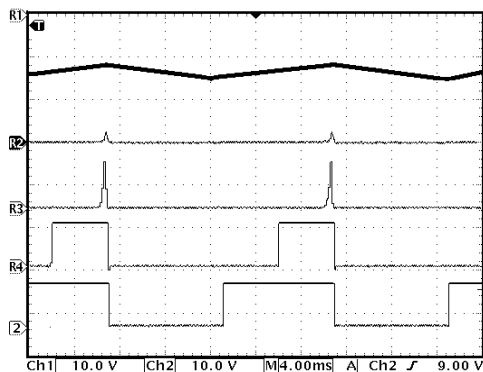


Figure 6. Oscillograms (4 ms/div) for the dc and triangular voltages applied to the gate (above curve, 10V/div), and amplified output signal (limited to 10 V) under different values of illumination from the LED (R2, R3, R4, and a).

It is evident the pulse-width-modulation nature of the output signal under different illumination levels. For the case of a triangular voltage, the maximum value for the duty is 0.5.

A higher range of variation for the duty, from 0.02 to 0.87, is obtained when a saw-tooth voltage is applied, as is shown in Figure 7.

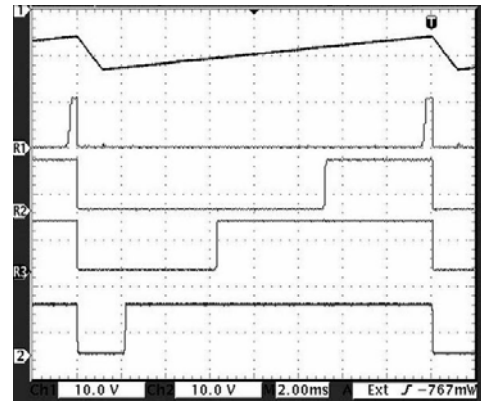


Figure 7. Oscillograms (2 ms/div) for the dc and saw-tooth voltages applied to the gate (above curve, 10V/div), and the amplified output signal (10 V) under different values of illumination (R1, R2, R3, and a).

From above, these non-equilibrium MOS capacitors can be used in applications such as digital sensitive optical sensors in automatic control and robotic circuits. Below, we present another new metrological application for these MOS capacitors.

3.3 Bi-MOS capacitor as optical digital position sensor for nulling and centering measurements.

The bicell optical detectors are well known for position sensing. They operate under the principle of having two photodiodes separated by a small gap. These elements are generally built onto a common substrate, thus their cathodes are shared. The anode or active area of each element is individually contacted. When a light spot is translated across the detector, its energy is distributed between both elements, and the difference in electrical contributions to each element defines the relative position of the light spot with respect to the center of the device. The detector provides the position information only over a linear distance of twice the spot diameter or until

the edge of the spot has reached the detector gap. A linear transfer function can be obtained for a rectangular light spot because its linear movement is proportional to the percentage of its area that shifts between the elements. The sensitivity of silicon bicell position detectors is 2-3 V/mm. Such detectors are most effectively used as nulling and centering devices with resolutions of 0.1 micrometers or higher. Nevertheless, these devices present analog output, thus an analog-to-digital signal converter (ADC) is necessary for their application in modern circuits. Additionally, the characteristics of the ADC can affect the precision in position measurements. The use of non-equilibrium processes in MOS capacitors under illumination allows for designing new devices for position sensing.

Figure 8 shows schematically the construction of our new position sensitive optical sensor. Our conception of this new position sensor is based on two MOS capacitors (C_1 and C_2), fabricated on the silicon substrate separated by a distance longer than the diffusion length of minority carriers in the substrate. Part of this area is covered by a metallic opaque shield. The size of the light spot must be slightly longer than the width of the shield. If the spot is located at the centre of the distance between both capacitors, approximately the same generation rate will be found at the end of each capacitor. The electric field at the lateral SCR of the biased capacitor separates the photo-generated carriers, and an equal photocurrent will flow through each capacitor. Under such conditions, and as it was shown earlier, an output PWM signal with the same duty can be recorded. A small movement of the spot will produce a misbalance in both

photocurrents and consequently a difference in duty for both output electric signals. If a differential amplifier is used to record these PWM signals, the information about the spot position may be obtained from the polarity and the duty of the resulting signal. Using (6), the mathematical modeling of the sensing characteristics of such position sensor has been provided for the silicon MOS capacitors, and a rectangular 2mm×1mm light spot with a power of 0.3 mW/cm² from a LED with emission wavelength at 930 nm. The initial light intensity provides two equivalent PWM output signals with a duty of 0.5. Taken into account a

variation of the incident optical power during the spot movement, the differential PWM signal (that can be provided by a differential amplifier) was calculated as the dependence of the resulting duty (D) on the spot position. Figure 9 shows this dependence.

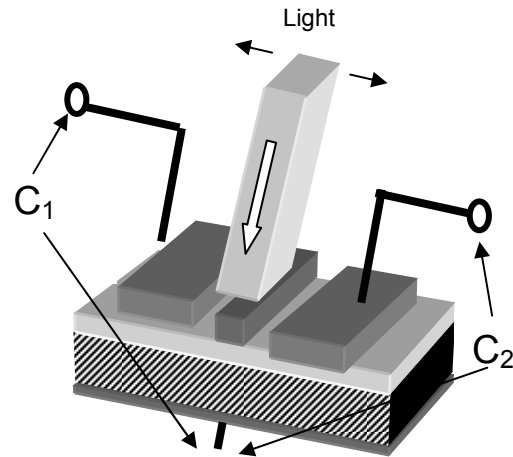


Figure 8. Schematic model of the new position sensitive optical sensor.

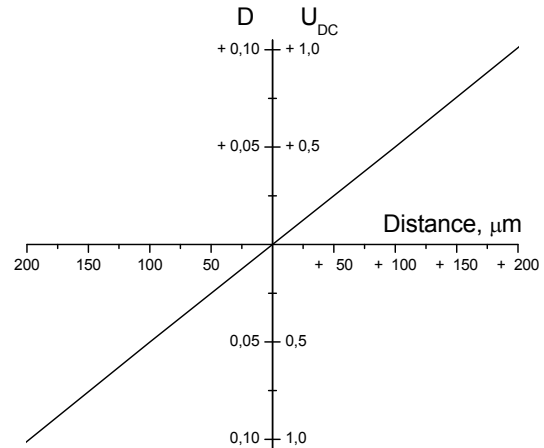


Figure 9. Calculated dependence on position of the light spot for the duty (D) and U_{DC} .

The transfer function is linear for the spot movement till 200 micrometers. At that limit the duty of the resulting PWM signal changes to 0.1. The polarity of the resulting PWM signal shows the direction of the movement. The use of a low-pass filter allows for transforming the 10 volts output PWM signal into a dc voltage (U_{DC}).

The slope of the dependence for U_{DC} allows for obtaining some conclusions about the sensitivity of this new position sensor. This sensitivity is two times higher than that obtained with standard bicell silicon analog detectors. We also conducted the experimental modeling of the reported sensors fabricated on a high-resistivity silicon substrate.

The PWM output signals from both capacitors were amplified with a two-channel transimpedance amplifier. The amplified signals were added with a differential amplifier and recorded using a digital oscilloscope. Each capacitor was connected in the circuit configuration shown in Figure 2.

The combination of the dc 10 V and the 10 V triangular voltages was applied to the gates of the capacitors. The oscillograms of the output signals with and without amplification, when the dc and triangular voltages are applied to the gate of MOS capacitors, are shown in Figure 10.

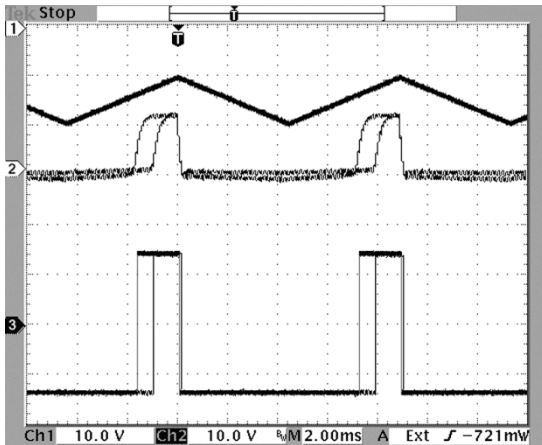


Figure 10. Oscillograms for the non-amplified (middle curves) and amplified (below curves) outputs obtained for the bi-MOS capacitor under non-uniform illumination conditions. The composition of the dc and triangular voltages (top curve) are applied to the capacitor gates.

Thus, the principal feature of our proposed sensor is the obtaining of a direct PWM output, with a duty that indicates the position of the light spot, whereas the polarity of the output signal indicates the direction of the spot movement.

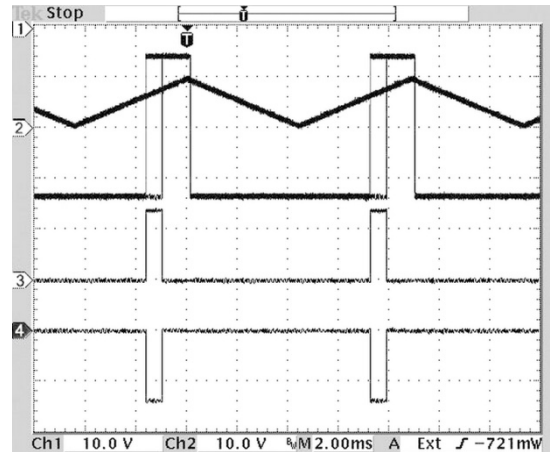


Figure 11. Added output signals obtained for the bi-MOS position sensor.

A detailed characterization of our new sensors for nulling and centering measurements will be presented in a separate publication.

4. Conclusions

In this work we showed that non-equilibrium processes in MOS capacitors can be used for designing new optical sensors with direct pulse-width-modulated output, with a duty proportional to the light intensity. The amplified digital output using a rectangular waveform allows for the direct connection to a microcontroller or other logic circuitry. Such sensors are useful for different applications in automatic control and robotics systems because of their fabrication simplicity, as well as the possibility to simplify electronic circuits. A new type of optical sensor for nulling and centering measurements is proposed using on-chip bi-MOS capacitors. Our previous mathematical and experimental modeling showed interesting features of these sensors as a possibility to fix the position of a light spot by observing the duty value of the differential output signal, and the moving direction of the spot through through the polarity of the differential output signal.

These sensors present a linear transfer function for a light spot movement of about 200 micrometers, and a two-time improved sensitivity in comparison with analog devices.

Acknowledgements

Authors thank the technicians of the Microelectronics Laboratory at the National Institute for Astrophysics, Optics and Electronics. This work was partially supported by CONACyT Mexico under grant 102397.

References

- [1] S. Sze, "Physics of Semiconductor Devices", New York: John Wiley & Sons, 1981, pp. 407-430.
- [2] D. Schroder, "Semiconductor Material and Devices Characterization", New York: John Wiley & Sons, 1990, pp. 405-423.
- [3] K. Y. Cheong, Sima Dimitrijevic, Ji Sheng Han, "Characterization of Non-Equilibrium Charge of MOS Capacitors on p-Type 4H SiC", *Materials Science Forum*, vol. 457-460, pp. 1365-1368, June 2004.
- [4] P. Peykov, J. Carrillo, and M. Aceves, "Triangular-voltage sweep C-V method for determination of generation lifetime and surface generation velocity", *Solid-State Electronics*, vol. 36, No. 1, pp. 99-102, January 1993.
- [5] M. Tapajna, L. Harmatha, "Determining the generation lifetime in MOS capacitor using linear sweep techniques", *Solid-State Electronics*, vol. 48, No.8, pp. 2339-2342, August 2004.
- [6] K. Ding, "Simple determination of the profile of bulk generation lifetime in semiconductor", *Solid-State Electronics*, vol. 46, No. 4, pp.601-602, April 2002.